

## GAITERED TROUSERS/MILITARY OVERALLS - #251

Based on a German drawing of an "American sharpshooter" and a "regular infantryman" in the Ann S. K. Brown Military Collection, Brown University Library, ASI Philip Katcher's *Uniforms of the Continental Army*, George Shumway, NY, 1981, figure 101, p. 136.

Overall and trousers made of linen, duck or wool broadcloth. Colors usually white, buff, brown or of blue and white stripes about 1" wide and worn vertically.

**MATERIAL:** Four yards canvas (30 inches wide) preshrunk, 8 to 10 oz.  
Five "Fall" buttons and eight buttons for ankles.  
One yard lining material (silk or other close-woven fabric).

**DIRECTIONS:** Turn under 1/4" on bottom edge of fall (front) linings. Sew to wrong side of fronts. Join fronts from top to notch. Turn under 1/4" on bottom edge of front facing, right sides together. Stitch across top. Trim to 1/4". Turn to inside.

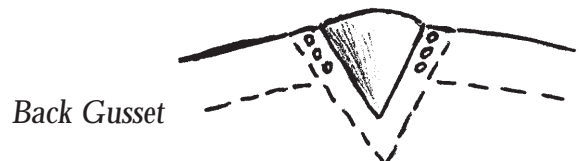
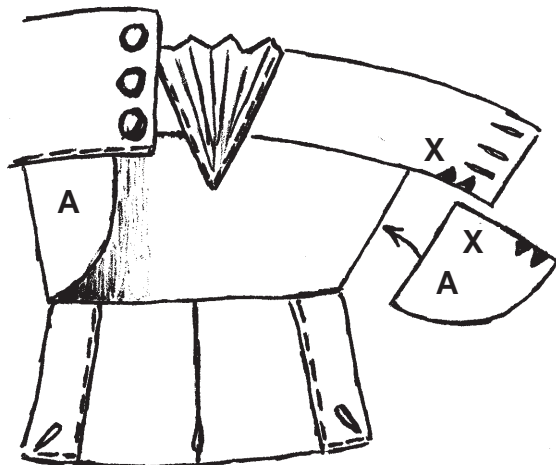
Cut two pieces to 2" x 5". Sew to back edge of side-front slashes, 1/4" seam. Turn to inside, turn under 1/4" on unnotched edges of top overlaps. Press. mating notches, join right side of overlap to wrong side of front slash 1/4" seam. Turn to outside on fold line. Top stitch.



Cut 3"x5" pieces of pants material. Press under 1/4" on one long edge. Stitch to inside of pockets. Fold pocket in half. Join from 1/2" across bottom.

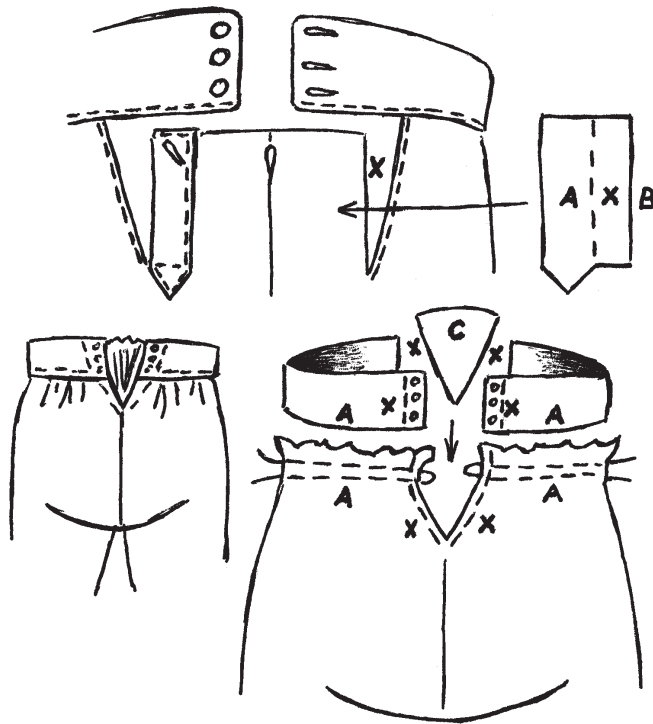
Join pants fronts and backs at side seams from top dot to bottom dot. Join pockets to fronts and backs to dot, matching notches. Turn pockets to front inside. Topstitch front edge 1/4 inch in.

Sew facing to tongue on curved edge.



Turn to inside and top stitch. Join to leg front. Press seam up and top stitch. Join to leg front. Press seam up and top stitch. Face heel in same manner. Make placket in leg, as at top, using 2" x 9 1/2" piece for underlap.

Join center backs from dot to notch. Press seam open and along fold lines at top edge of back. Join waist bands and facing at end and across top. Pin under flaps to fronts. Stitch on



waist bands, matching notches and side seams to dots, and pulling up back gathers to fit. Finish bottom edge of facing. Put eyelets in back ends of waist band. Face back gusset as tongue. Top stitch back to gusset behind eyelets.

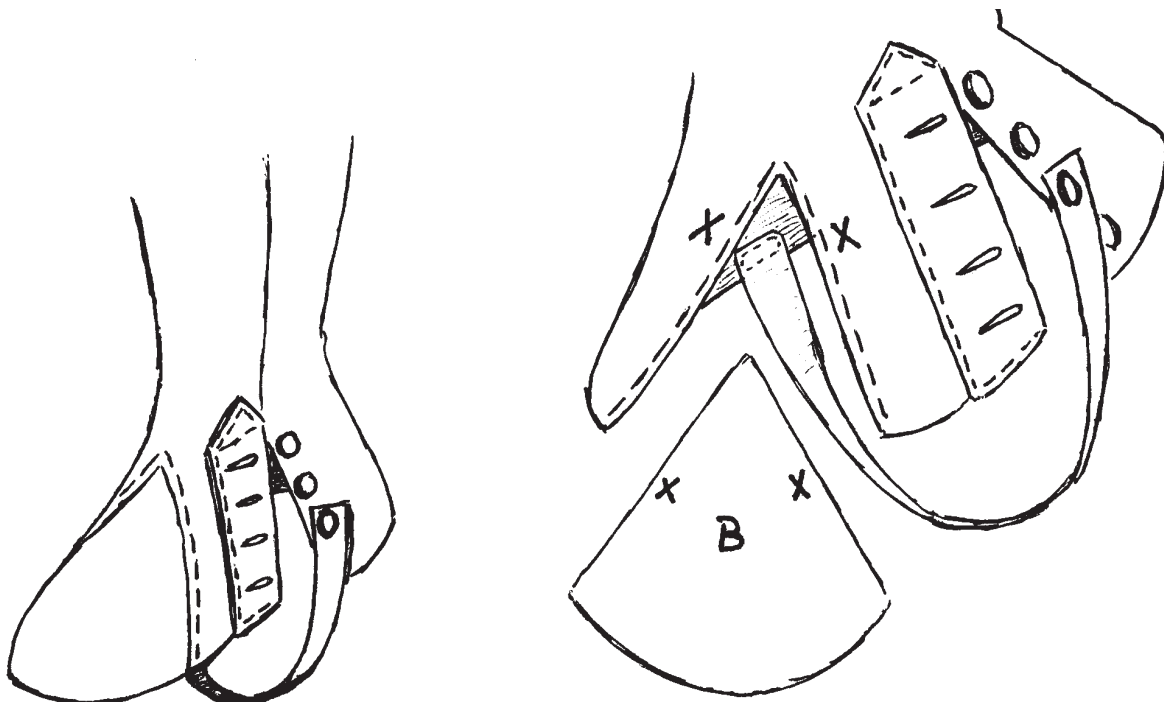
Sew leg inseams together. Join remainder of crotch seams. make instep straps, adjust for length and sew in place. Make buttonholes.

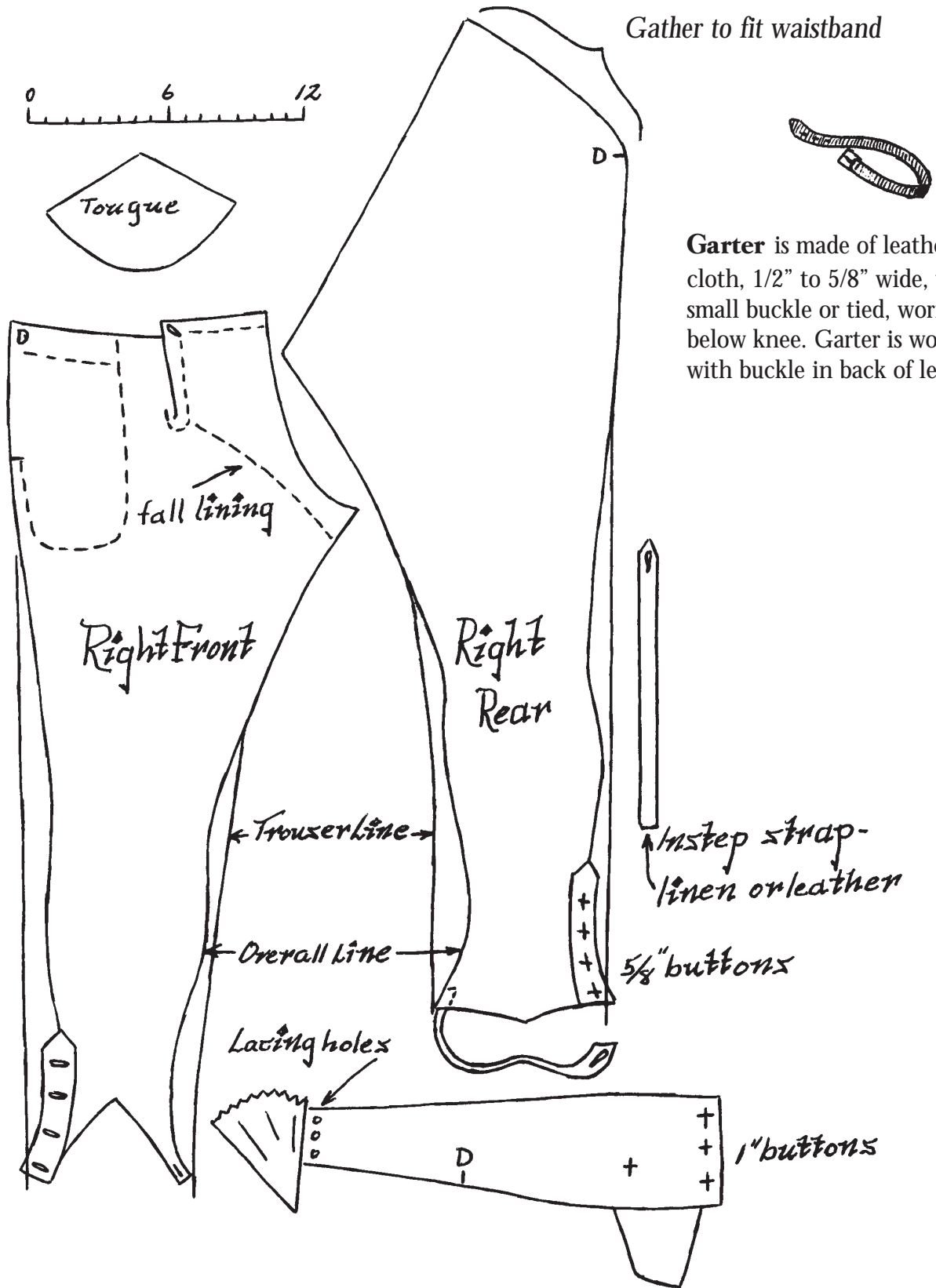
After fly for front of overalls have been attached, match double notch to double notch on front facing of waistband, stitching on waistband front with facing. Note: Fly on pattern called front underflap, or Bearer.

Fold and press tabs (A) on line X. Match line X on tabs to line X on front. Fold under short side, stitching tab to front at line B. Top stitch long side to front.

Run two rows of long, loose stitches close to top edges of overall back. Join waistbands to leg sections, matching notches and side seams to dots. Pull gathers to fit. Make eyelets in back ends of waistbands, face gusset and matching lines X, of gusset C and lines X of backs. Stitch together with A sections on top, being sure to leave eyelets on top free from stitching.

Instep strap C is sewn to leg at point as shown, and is attached at other end to second button. Attach tongue B to leg matching lines marked X at edges, on tongue and leg:





**Garter** is made of leather or cloth, 1/2" to 5/8" wide, with small buckle or tied, worn below knee. Garter is worn with buckle in back of leg.

From a German hand-colored engraving  
 1784: General Washington's Mounted Lifeguard,  
 probably 3rd Continental Dragoons.  
 ASI Katcher, Philip. *Uniforms of the  
 Continental Army*, p. 50  
 Geo. Shumway, Rbk.

# MILITARY OVERALLS

Waist 30"-34"

© 1995 Northwest Territory Alliance

1/8" seam allowance  
 unless otherwise  
 indicated

**Actual pattern @ 20%**

